

PLEASE TURN OFF ALL TEMPLATE LAYERS BEFORE SUBMITTING
***IF A BARCODE IS NEEDED, PLACE A WHITE RECTANGLE OR THE WORD "BARCODE" IN THE AREA NEEDED.**
THE MINIMUM SIZE FOR THE BARCODE IS 1.25"x.625" *

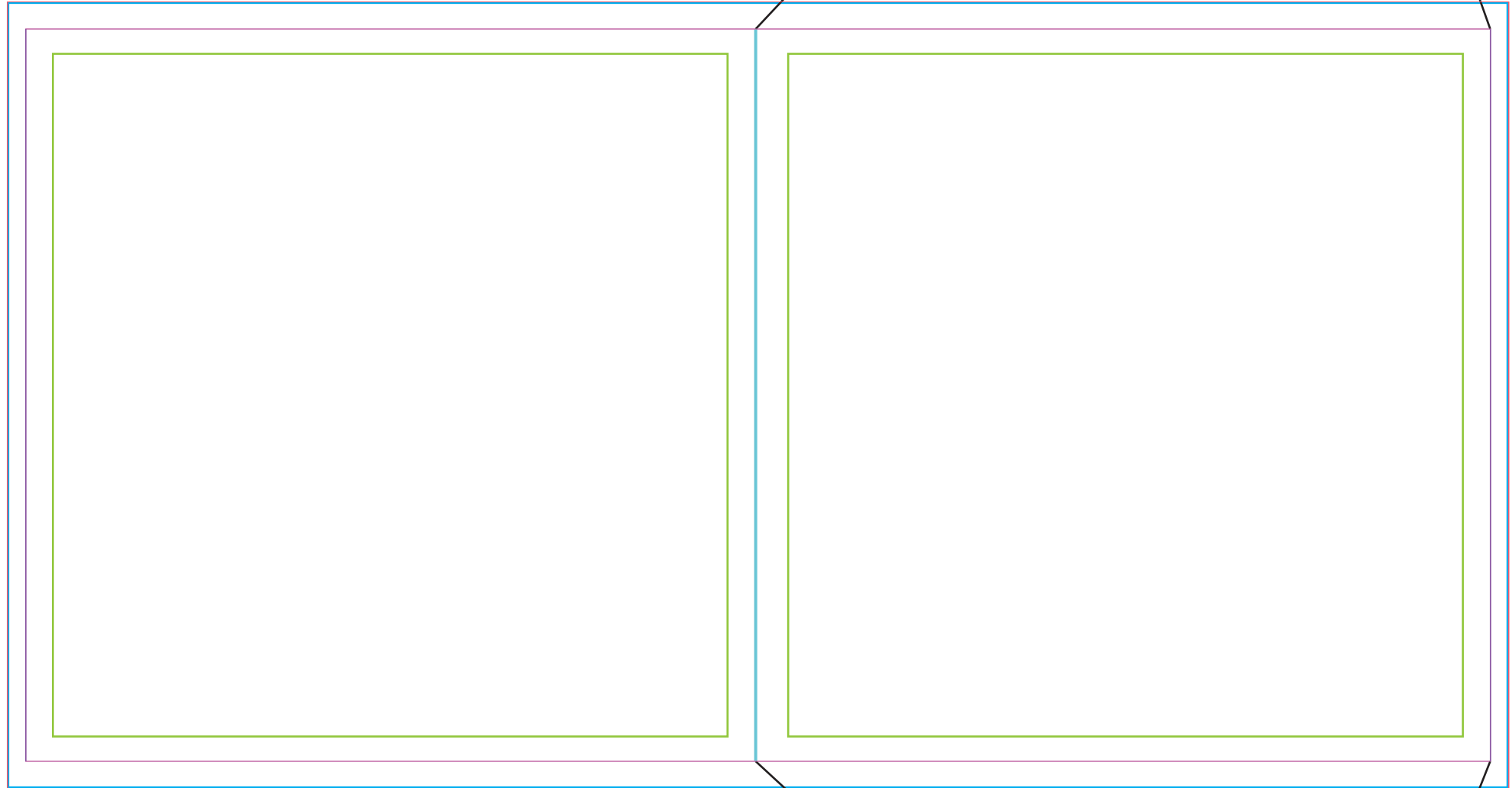
S100

2 panel sleeve

back of sleeve

Glue Assist

front of sleeve



Glue Assist

the middle solid blue line represents the fold line and the exterior line represents the bleed line.
Important: Your design must extend to the bleed line.
If you'd like a top loading sleeve you'll also need to flip your art 180 degrees (upside down) before submitting it.
IMPORTANT: Art should go all the way to the outside line for bleed. . The green line is the safety line- ALL TEXT AND IMPORTANT ELEMENTS
NEED TO STAY INSIDE THE GREEN LINE. Please remove or turn off template layer before submitting.

rev. 09-27-15